

Exhibitions 2002

24 September – 27 October

Rivers + Rocks:

Select works of Arthur Boyd & Brett Whiteley

A Bundanon Trust Travelling Exhibition

Rick Amor: The sea

An MPRG Exhibition

5 November – 8 December

Edna Walling's Gardens: A visionary designer

An MPRG Exhibition

At First Site: Robyn Stacey

Toured by MGFNSW and Hazelhurst Regional Gallery



Above
Brett Whiteley
Marulan bird with rocks
oil, mixed media and rocks on composition board
96 x 76
collection: Brett Whiteley Studio Museum

15 December 2002 – 2 February 2003

Stella Bowen:

Art, love and war

An Australian War Memorial Travelling Exhibition

The Full Majesty of Nature: The Collection of Samuel Arthur Ewing

An Ian Potter Museum of Art exhibition



Above
Robyn Stacey
Surrender (Blue) 2000
type C photograph
Courtesy of the artist

Top
Stella Bowen
Provençal conversation,
painted in Cagnes
c.1933
oil on canvas
Private collection

MPRG

Mornington Peninsula Regional Gallery

Civic Reserve Dunns Road
Mornington Victoria 3931

Tel: 03 5975 4395

Fax: 03 5977 0377

mprg@mornpen.vic.gov.au

www.mornpen.vic.gov.au/gallery



Melway Ref 145 G4

Open

Tuesday – Sunday
10.00am – 5.00pm

Closed Mondays
and some public holidays

Admission

Adults \$3.30
Concession \$1.65

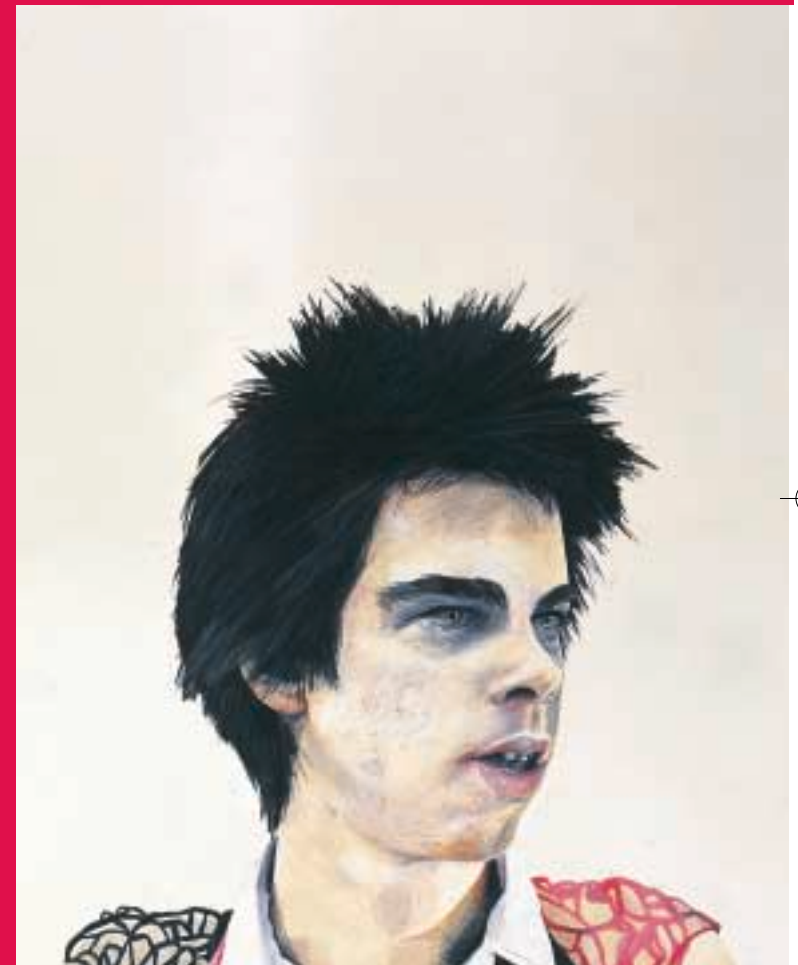
Children under \$5.00
& MPRG Members FREE

Inside left
Gareth Sansom
Electrical experiments
2002
digital print
46.33 x 121.92 cm
Collection of the artist

Inside right
Greg Deffereos
Kiss or Compulsions
Like Gravity 2000
Bronze
Photograph Iris Fisher

Front cover
Jenny Watson
Portrait for Nick 1977
gouache and coloured
pencil on fabriano paper
Collection: Mornington
Peninsula Regional Gallery
Gift of the Visual Arts
Board, Australia Council
1984

Mornington Peninsula Regional Gallery



Winter 2002



The MPRG is a cultural facility of the Mornington Peninsula Shire

Nick Cave: The Good Son



The underbelly of Melbourne's punk scene in the late 1970s spawned a generation of artists, writers, filmmakers and musicians. Friendships, connections and collaborations were made which pushed artistic boundaries and ignited international careers. And this was the case for no one more so than young art student and aspiring front man Nick Cave.

The expression of these friendships, connections and collaborations are the inspiration for this exhibition that includes a group of original art works by Nick Cave,

unpublished photographs for an early Boys Next Door record cover, rare archival material including original lyrics, posters and European video interviews, and works of art by Jenny Watson, Howard Arkley, Gareth Sansom, Andrew Browne, Jenny Bannister, Bill Henson, Jon Cattapan, Peter Booth, Polly Borland, Ross Waterman and Peter Milne.



Indemnification for this exhibition is provided by the Victorian Government

Special events at Linden - St.Kilda Centre for Contemporary Arts

Ross Waterman Cave unpublished

Thursday 15 August 2002
6.30pm – 7.30pm
Cost: \$10

Bookings: Tel: 9209 6794 or
email: admin@lindenarts.org

View a selection of unpublished photographs of Nick Cave performing live with

The Birthday Party and The Bad Seeds since the 1970s by Ross Waterman, participating artist and exhibition research consultant. Ross will also discuss the work of other artists including Andrew Browne and Peter Booth and their artistic relationship with Nick Cave.

Jenny Bannister Illustrated talk

Thursday 22 August 2002
6.30pm – 7.30pm
Cost: \$10

Bookings: Tel: 9209 6794 or
email: admin@lindenarts.org

Jenny Bannister, one of Australia's most innovative contemporary fashion

designers will talk about her pioneering punk designs in the 1970s and 80s when she created the most outstanding plastic and leather garments which are now housed in Australia's major museums and art galleries.



Oblique Shadows

Asian influence in Australian sculpture

Initiated by Sculpture Square, Singapore

Oblique Shadows examines the diverse ways in which Australian sculptors have engaged with Asian art and culture, revealing a rich interplay between cultural traditions and contemporary art practice. While the differences between Eastern and Western cultures are familiar to many people, *Oblique Shadows* instead focuses on the similarities between cultures and how Australian artists and institutions are increasingly drawn towards Asia.

Artists represented in the exhibition include: Jock Clutterbuck, Greg Deftereos, Kate Ellis, Carolyn Eskdale, Philip Faulks, Adrian Mauriks, Louise Paramor, Elizabeth Presa, and Richard Stringer.

www.obliqueshadows.com

